

## Part of the Family

### Learning values

- Exploring relationships between babies and parents
- Investigating ways to sort animals
- Matching baby animals with mothers and fathers
- Understanding the needs of living things, in particular baby animals

### Recommended materials

- 9218 Wild Animals Set

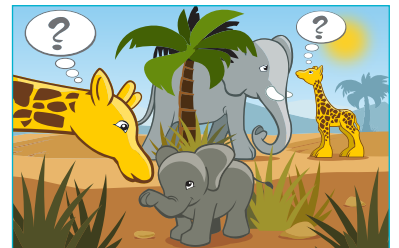
### Vocabulary

Encourage the use of these words during the activity:

- Baby
- Family
- Adult
- Parent
- Mum
- Dad
- Needs
- Care
- Food
- Shelter
- Water

### Connect

- Ask the children if they have ever seen a baby animal and have them visualize the animal in their heads. Have the children say the name of this animal to a friend. Discuss the characteristics of babies. How can children tell if an animal is a baby or an adult?
- Facilitate a discussion on what baby animals need such as food, shelter, water, protection, etc. How can baby animals communicate to their parents that they need something?
- Ask the children to think about who takes care of them. Is it a mum, dad, aunt, grandpa, etc? Talk about how this person is usually bigger, older or more experienced. Introduce the word “adult” and discuss its meaning. Tell the children that baby animals need adults to take care of them too. Introduce the idea of families and talk about how animals have families just like people.



Use the illustration to support the Connect story

## Construct

- Have the children create and build an animal family by matching a baby and a parent with common characteristics. Then create and build an environment for the animal family that includes everything they need.



Suggested model solution

## Contemplate

- As the children build, ask them about the different families. Which family is the fastest? Which family swims? What does each family need in their environment?
- Encourage the children to role play situations where a baby animal needs something and the adult animal provides it.
- Talk about what human babies need. How are human babies and animal babies alike? How are they different?

## Continue

- Animals are alike and different in a variety of ways. Brainstorm different ways to sort the animals, and then allow children to demonstrate.
- What happens when a baby animal gets lost? How does it feel? Ask the children to build solutions to help the baby animal get back to its parent.

### Check for evidence of learning

Have the children:

- Match a baby with a parent for three types of animals.
- Name or demonstrate one or more needs a baby animal may have.
- Show or describe one or more parts of the environment they built that fulfils the baby animal's needs.



